

JINHU 金湖集团
JINHU GROUP

JINHU
金湖集团
JINHU GROUP
金湖


唯有好的机器，才有好的未来
GOOD MACHINE
RESULT IN HIGH QUALITY PRODUCT

SCREW BARREL Accessorial Parts

螺杆 机筒及附件



地址：舟山市经济开发区B区弘生大道299号 邮编：316001
Add: No.299, Hongsheng Road, Area B, Zhoushan Economic Development Zone, Zhoushan City,
Zhejiang Province, 316001 P.R. China
国内销售部 (Sales Tel) :0580-2680208 2680168 2680198 2680228
外贸部 (Trade Department Tel) :0086-580-2680958 2680238 2680078 2680838
售后热线 / 传真 (Service Hotline/Fax) :0086-21-69595223 69592961
传真 (Fax):0580-2680999
E-mail: sales@jinhu-china.ccm
http: //www.jinhu-china.com



JINHU 2019.04 ZHONGMENG media

浙江金海塑料机械有限公司
ZHEJIANG JINHAI PLASTIC MACHINERY CO.,LTD.

浙江金湖塑机股份有限公司
ZHEJIANG JINHU PLASTIC MACHINERY CO., LTD.



质量管理体系符合
GB/T19001-2000 idt ISO9001:2000标准

金湖人的意识

CONSCIOUSNESS OF JINHU PEOPLE

金湖人在销售上需要主动热情地了解市场的波动、新产品的开发、同行的信息、市场的信息、服务的信息和需求的信息。加强自我的形象、信息的反馈、产品的更新、合作的意识、客户意识、公司的保密意识。

金湖人在生产上需要加强自我的成本意识、质量意识、生产意识、效率意识、规范意识、管理意识、安全意识。质量是生产出来的，不是检查出来的。

金湖人在服务上需要主动、热情、定期、不定期的服务。加强自我形象、不断加强自我的服务意识、销售意识、客户意识、市场意识、成本意识、沟通意识和朋友意识。站在主人翁的角度来要求自我的工作。

金湖人在技术上需要快、简单、实用、更经济的精神，也需要一丝不苟、十全十美的精神。不断加强企业的竞争意识、市场意识、成本意识、客户意识、品牌意识。提高自我的专业技术、不断学习新的知识和设计理念。

金湖人在管理上需要以成为公司制度的楷模为目标，从我做起互相监督、站在企业的角度来考核自我的一切工作。从工作安排、计划、监督、检查、反馈、考核、服务等等。以高标准、严要求、制度化来开展自我的工作，一切以效率为主、以质量为核心、团结为后盾，发挥金湖的真诚合作、求实拼搏的精神。

金湖人有了目标、有了责任、有了方法，我们才会不断地去要求自我认真，一位不苟、持之以恒地提高自我的工作质量，提高自我的生活质量，加强自我的社会责任感，为社会文明而努力奋斗。

Initiative and enthusiasm in the market, and understand the volatility of the market, new product development as well as information of opponent market, service and demand. Strengthening ego image, information feedback, product updates, sense of cooperation, customer awareness, and the company's confidential consciousness.

Jinhu people have to strengthen the self production cost awareness, quality consciousness, production consciousness, efficiency consciousness, standard consciousness, managing consciousness and safety consciousness. Quality is in the production, not in the examine.

Jinhu people are always active and warm in services, periodically and periodically to service customers. Strengthening Jinhu people's self-image and self service consciousness, sales consciousness, customer awareness, market consciousness, cost awareness, communication and friends consciousness continuously. Standing in the angle of self to request the masters.

Jinhu people always have the perfect spirit of fast, simple, and practical, more economical and more meticulous in technical; strengthening the competitive enterprise consciousness, market consciousness, cost consciousness, customer awareness and the brand awareness constantly. Improving the self professional technology and learning new knowledge and design concept constantly.

People always form ourself as model base on a formula system in management. We begin from ourself and supervise each other, all our work will standing in the point of view of our enterprise to assessment ourself from working arrangement, plan, supervise and inspect, feedback, assessment and service, etc. With high-standard requirements and institutionalized to develop our work, with priority work to the efficiency and take the core work to the quality, we Jinhu people unite and cooperate each other to develop the sprit of Jinhu people's sincerity cooperation and fact attitude.

Only Jinhu people have the target the responsibility and the methods, then we can improve our workmanship, the quality of life and the sense of social responsibility to strive for our social civilization continuously and fastidiously.

中国民营 500 强
上海民营企业 100 强
浙江省民营企业 50 强

企业宗旨

真诚合作 求实拼搏 不断创新 永争第一

Enterprise Tenet

Sincere Cooperation Practicality and Striving
Continuous Innovation Being the First Forever



董事长：何青雷
President: ChunLei He

**中国优秀民营科技企业家、浙江省政协委员、
浙江省工商联会常委、舟山市政协常委、舟山市工商联会副会长、
舟山市企业家协会副会长、舟山市海外联谊会副会长**

China Excellent entrepreneur for Private Hi-tech Business

Member of Zhejiang Committee of CPPCC

Member of Standing Committee of Zhejiang Industrial & Commercial Association

Member of Standing Committee of Zhoushan Municipal Committee of CPPCC

Vice-chairman of Zhoushan Industrial & Commercial Association

Vice-chairman of Zhoushan Enterprise Directors Association Vice-chairman of

Zhoushan Overseas Friendship Association

金湖集团凭着其多年酝酿的独特企业文化，以及企业对全球经济发展的热切关注，以磅礴的气势和迅捷的反应不断壮大，使自己在本行业中深具规模，倍受瞩目。集团从事塑料机械制造长达 33 年之久，在上海、浙江设立了五个生产基地，拥有舟山金海机械有限公司、舟山金湖化纤机械有限公司、浙江金湖塑料机械有限公司、上海金湖挤出设备有限公司、上海金湖机械有限公司、上海金湖塑料机械有限公司等十多家公司。总占地面积达 1200 多亩，员工人数千余名，其中包括各类技术人员 400 多名。公司产品使用“金湖”注册商标。在公司

员工的不断努力下，公司先后获得“中国民营企业 500 强”、“上海市百强民营企业”、“浙江省百强民营科技企业”、“浙江省诚信企业”、中国轻工优秀民营百强企业”、“中国机械优质产品”、“中国十佳塑料机械企业”等荣誉称号。此外，公司还拥有独立的质检中心，并取得中国质量协会质量管理体系认证，其质检水平具有较高的权威性、公正性及可靠性。



位于舟山经济开发区 B 区的生产基地 (金湖集团)
Jinhu Group in Section B of Zhoushan Economic and Technological Development Zone ETDZ



位于舟山经济开发区 A 区的生产基地 (金海机械)
Jinhai Machinery, Located in Section A of Zhoushan Economic and Technological Development Zone (ETDZ)



位于上海黄渡工业园区的生产基地 (一分公司)
Production Base (HUANGDU INDUSTRIAL PARK OF SHANGHAI)



上海曹安公路 4246 号 (上海金湖挤出设备有限公司)
The manufacturing base at Shanghai Huangdu Industrial Park Shanghai jinhu Extrusion Equipment Co., Ltd.

JINHU treats people as the base and seeks development by innovation. With its distinct enterprise culture and rapid reaction, it has owned certain scale. This group has been in the line of plastic machinery for more than 33 years, so far it has established five production bases in Shanghai, Zhejiang. It owns ten specialized companies such as Zhou Shan Jinhai Machinery Co., Ltd., Zhou Shan Jinhu Chemical Fiber Machinery Co., Ltd., Zhejiang Jinhu Plastics Machinery Co., Ltd., Shanghai Jinhu Extrusion equipment Co., Ltd., Shanghai Jinhu Machinery Co., Ltd...etc. Its total area exceeds 1200 Mu; it has more than one thousand staff including more than 400 technicians. JINHU is one registered trade marks of this Group Co.. With common efforts of all staff, this group Co. has got a lot of honors, such as "Top 500 China's Private Enterprise"; "Top 100 Shanghai's Private Enterprise", "Excellent Top 100 Private Scientific & Technological Enterprise in Zhejiang Province", "Honest & trustworthy Enterprise in Zhejiang Province", "Excellent Top 100 Private Enterprise in China's Light Industry", "Excellent Quality Product of China's Machinery", ...etc. In addition, this Group Co. has independent quality inspection center, and has obtained certain certificate from China Quality Association with rather high authority, justness and reliability.

质量是企业的生命、技术是企业的源泉、管理是企业的核心、人才是企业的根本、服务是企业的宗旨。

The quality is the life of enterprise, the technology is the mine of enterprise, the management is the core of enterprise, the talents is the foundation of enterprise, and the service is the purpose of enterprise.

金湖塑机、塑机金湖、金湖为人人、人为金湖、金湖努力为社会服务、金湖以品质、科技、节能、高效、创新的社会化的责任感而努力奋斗。

金湖集团的主要产品有：各类塑料管道生产线；各类塑料异型材生产线；各类塑料板材、发泡板、片材、流涎膜生产线；各种用途的单螺杆、双螺杆挤出机；平行双螺杆挤出机；各类塑料机械用螺杆、机筒；化纤卷绕头及化纤成套生产设备；各类优质水环式真空泵，高可靠性水泵，热油泵及液压系统，热恒温系统；电工电缆机械；化工成套设备；齿轮减速机箱等。产品远销东南亚、中东、南美、欧共体等国家。在产品质量上精益求精，在技术上不断完善，在售后服务上建立了全国完善的网点服务体系，成为全国塑机行业中发展最快的、技术最强的优秀企业，深得用户的好评。我们的优势在于不断为用户提供优质、可靠、价格合理的新产品，帮助用户创造最大的利润和商机是我们最终的目标。

In 2002, this Group Co. has imported HVOF alloy powder spray equipment and 2 sets CNC milling machine for screw & barrel to insure products processing precision, thereby the screw & barrel get a good stiffness and toughness property, prolong service life. JINHU GROUP mainly provides all sorts of plastic pipe production line, all sorts of profiled production line all sorts of plastic Board, Sheet, Film production line, all sorts of single and twin screw extruder, all sorts of screw & barrel for plastic machinery, winding head for chemical fibers and chemical fiber complete set

of production equipment, all sorts of excellent water cycled type vacuum pump, high reliability water pump, hot oil pump and pneumatic system, thermal constant temperature system, electrical cable machinery, chemical complete set of equipment gear box...etc. Products are exported to such countries and regions as Southeastern Asia, mid-east, South American, EU...etc. Always improving and developing the quality of products and have established complete nation-wide service network. It has developed into the strongest enterprise in national plastic machinery industry. Our advantages lie in that we continuously provide new items with excellent quality and reasonable price. It is our ultimate target to help our customers to create best profit and business opportunity.

JINHU for plastic machinery, plastic machinery by JINHU; JINHU for All, All for JINHU. JINHU performs its responsibility do it best to serve society with a high quality & technology, high-efficient energy saving and innovative products.

Research and Development

研究开发



以创新的理念，求产品的发展
金湖人相信——创新是企业永续发展的灵魂

经过三十多年的发展与积累，金湖聚集了一批善经营、懂管理、精专业、求卓越的优秀员工，他们以勇于开拓的创新精神，致力于产品研究与技术开发。从单一的生产加工螺杆到设计研制整条塑料生产线及化纤成套设备，在此基础上再拓展房地产及投资公益教育事业，金湖不断适应市场的变化，在优胜劣汰的激烈竞争中屹立不倒，更是以乘风破浪的势头不断向前发展。



The idea of innovation, push the developments of product

Jinhu people believe that only innovation can sustain the development of an enterprise

With over twenty years of development and accumulation, Jinhu has gathered a group of excellent employees specialize in managing, administration and specialized works. All of them devote themselves to the product research and technological development. From the single manufacturing and processing of screw to the designing and manufacturing of the whole production line of plastics and the whole set of chemical fibre, Jinhu also expands its business to real estate and invests in education sector. Jinhu keeps gearing to the market, and pressing ahead for development.



Advanced CNC Machining Center 先进的 CNC 加工中心



CNC加工中心

引进国际先进CNC加工中心、数控螺杆铣、超音速喷涂设备等。这些装备使我们的品牌如虎添翼，在国内乃至国际塑机行业中独占鳌头。

Advanced CNC Machining Center

We have imported advanced machine such as CNC milling machine, HVOF alloy powder spray unit and so on, with which our company has more ability and our brand is becoming leader in the field of plastic machinery both at home, even at abroad.

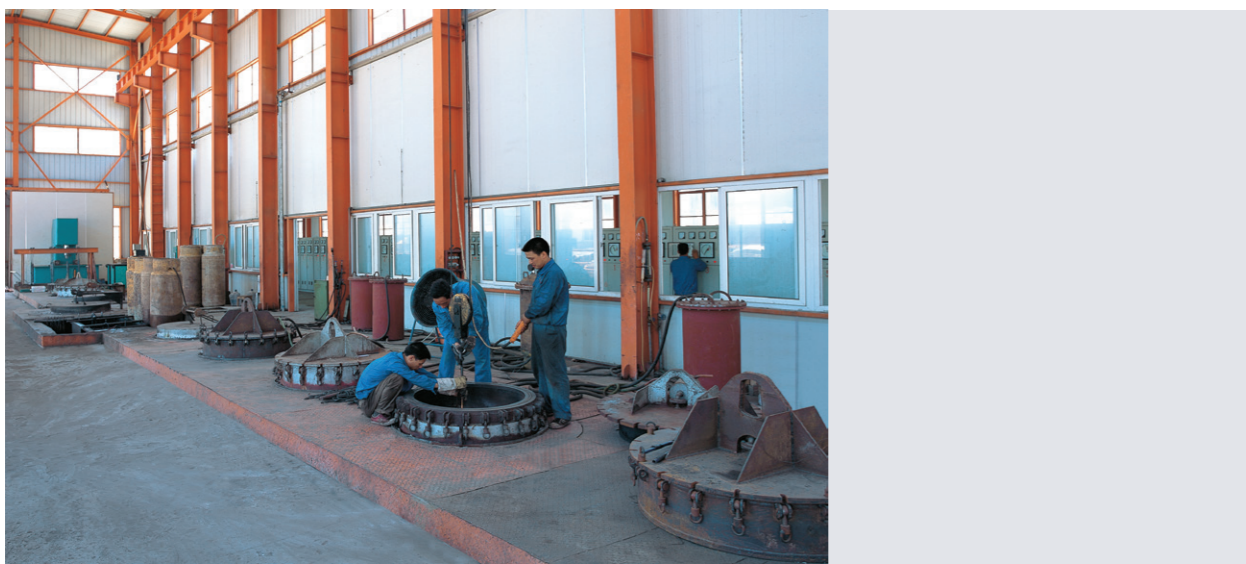


先进的合金喷涂设备
Advanced Alloy Powder Spray Unit



CNC加工中心
CNC Equipments

Advanced Heating



金湖（舟山）工业园区先进的热处理设备
Advanced Heat Treatment Equipments In Zhoushan Industrial Park

先进的热处理及表面加工设备

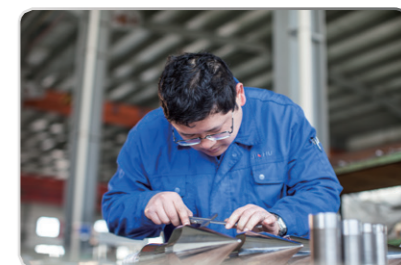
公司拥有国际上最先进的合金喷涂设备，镀铬车间，先进的热处理车间拥有的氮化炉，真空淬火炉，渗碳炉等，先进的设备以保证产品的质量。

Advanced heat treatment equipments and test devices

The advanced heat treatment, alloy powder spray unit, vacuum quench and cementite oven and chrome plating workshop insure our products have higher quality.



螺杆, 机筒质量检验 Quality Control Center

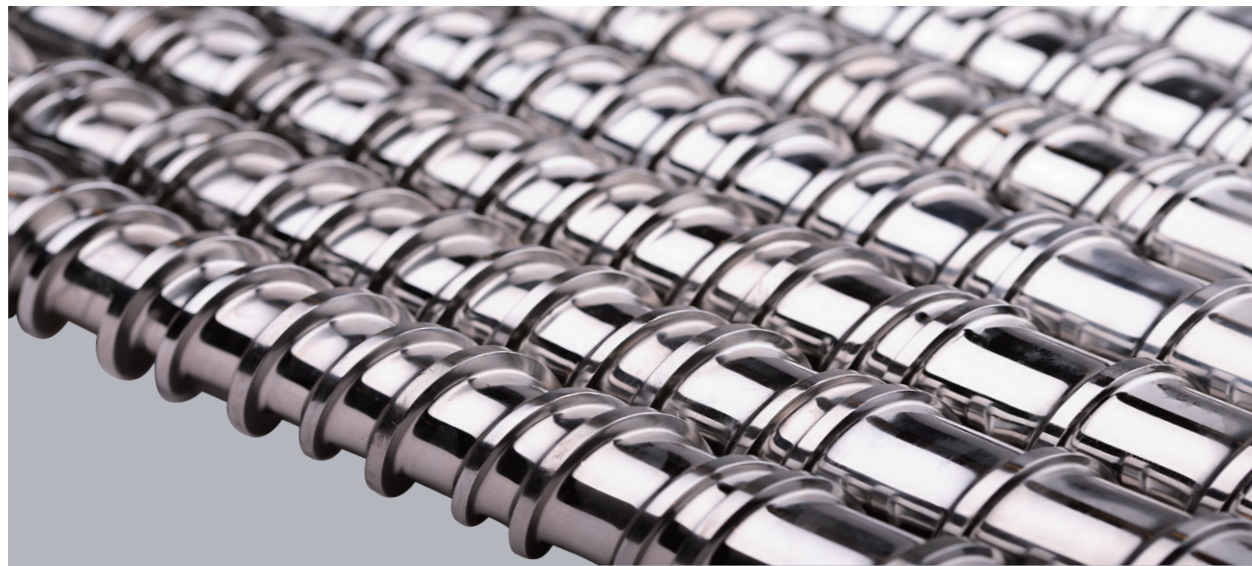


原材料的物理及化学检测 Physical And Chemical Analysis For Raw Material

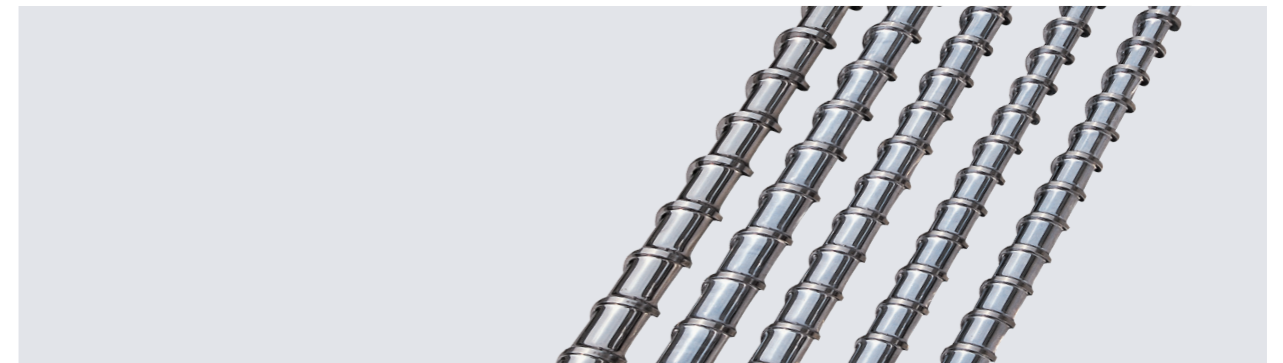
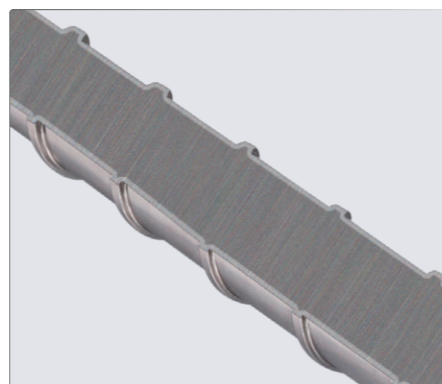
Screw

For Injection Molding Machine

注塑机螺杆



- 1、材质：38CrMoAl A
氮化处理，表面硬度：HV≥900
氮化层深度：0.5-0.8mm
- 2、材质：特殊不锈钢，
淬火处理，硬HRC55-58，适合各种透明料及腐蚀性强的物料，提高螺杆的使用寿命。
- 3、材质：表面碳化钨超音速整体喷焊，提高螺杆的耐磨性



1. Material: 38CrMoAl A
Nitriding treatment, Surface hardness: HV≥900
Nitriding depth: 0.5-0.8mm
2. Material: Special stainless steel
Quenching treatment, hardness: HRC55-58,
Suitable for the screw which used for transparent plastic products and high corrosion plastic processing, prolong life of screw.
3. Material: Tungsten alloy.
Surface spraying, improve abrasion performance of screw.

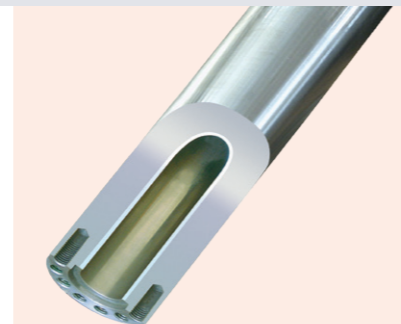


Barrel

For Injection Molding Machine

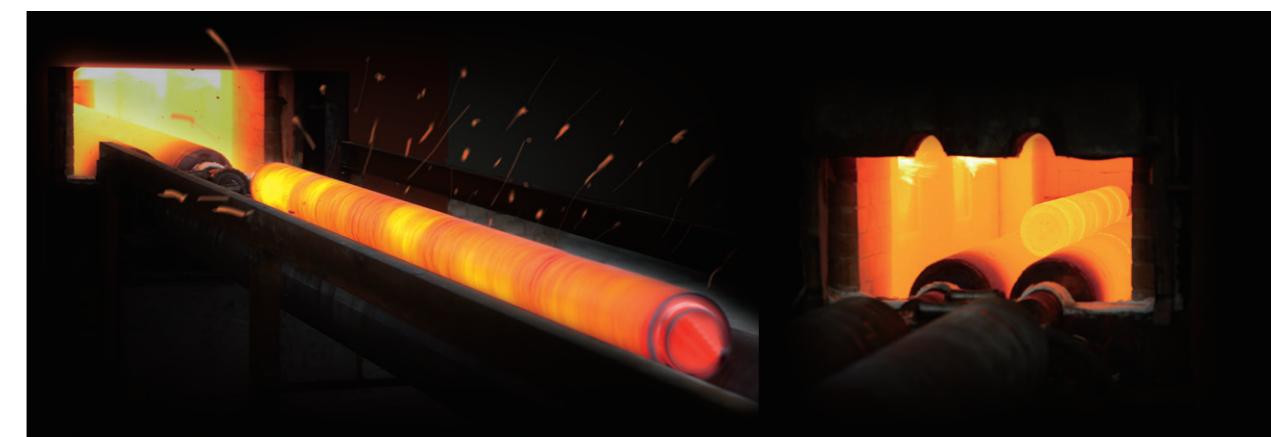
注塑机机筒

产品系列 Product Series



- 1、材质：38CrMoAl A
氮化处理，表面硬度：HV≥900
氮化层深度：0.5-0.8mm
- 2、材质：双合金浇铸，提高机筒的使用寿命

- 1. Material: 38CrMoAl A
Nitriding treatment, Surface hardness:
HV≥900
Nitriding depth: 0.5-0.8mm
- 2. Material of barrel inside layer:
Tungsten carbide alloy, Centrifugal
casting, prolong life of barrel.



Assemble

Assemble Parts Of Screw & Barrel 注塑机螺杆附件

产品系列 Product Series



- 1、材质：38CrMoAl A，
氮化处理，表面硬度：HV≥900
氮化层深度：0.5—0.8mm
- 2、材质：特种合金钢
经过真空淬火等热处理工艺，能大大提高三小件的使用寿命

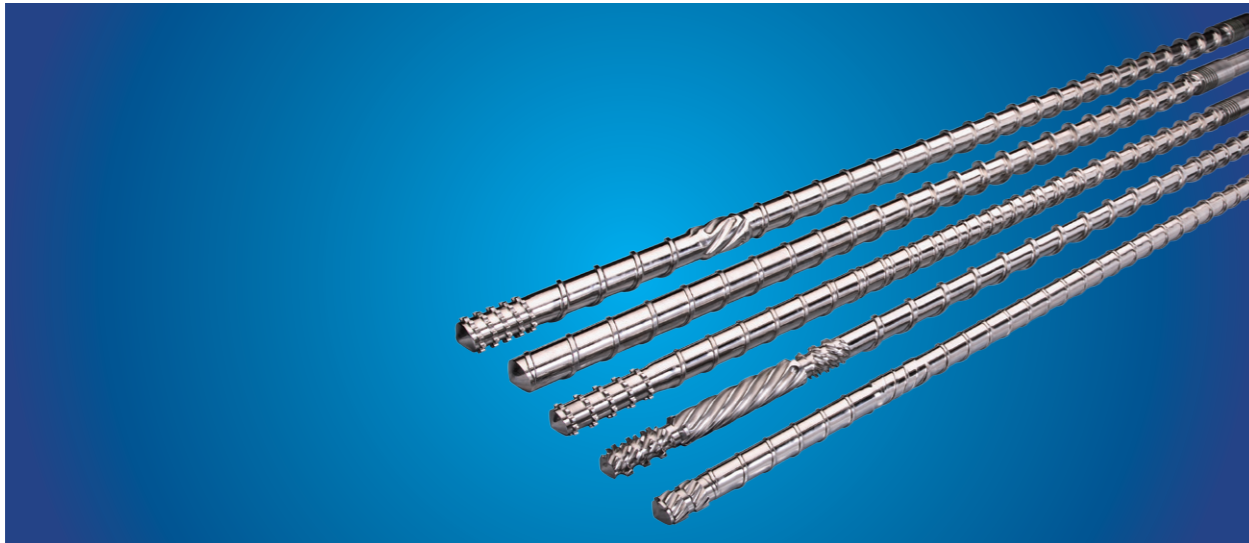
1. Material: 38CrMoAl A
Nitriding treatment, Surface hardness: HV≥900
Nitriding depth: 0.5-0.8mm
2. Material: Special alloy steel
Vacuum quenching treatment, prolong life of parts.



Screw & Barrel

For Single Screw Extruder
单螺杆挤出机螺杆机筒

产品系列 Product Series



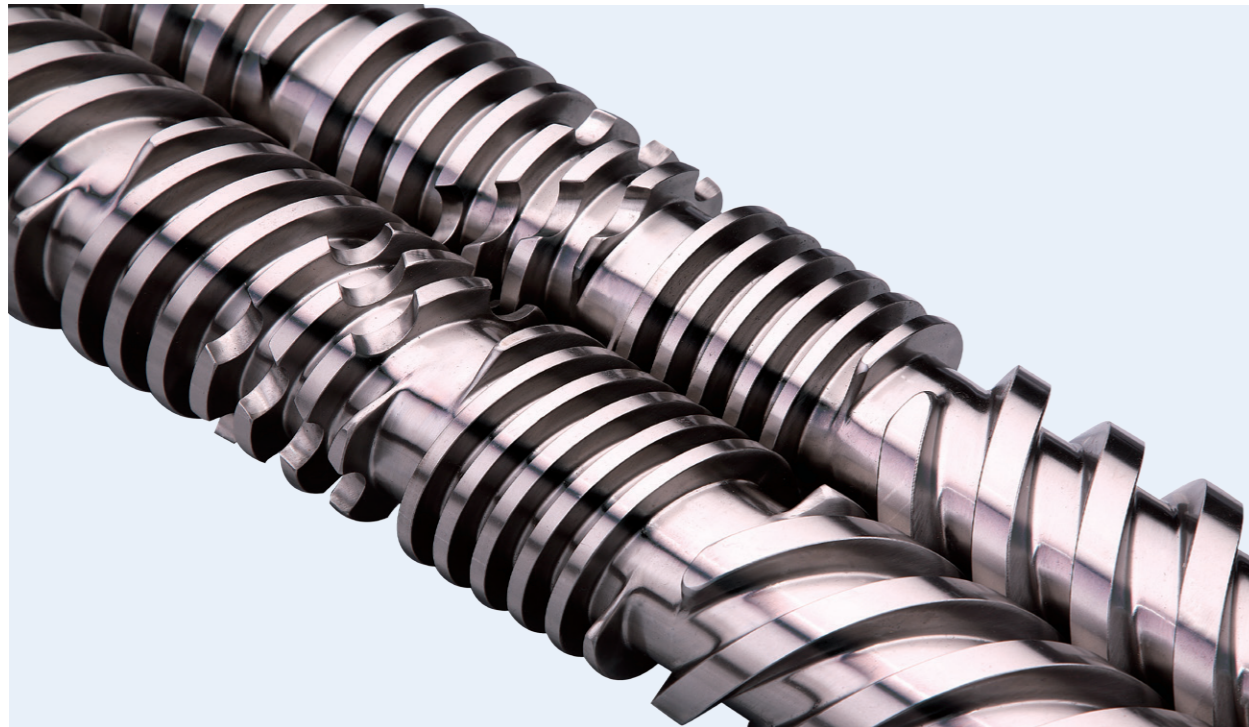
规格: $\Phi 15\text{mm}-\Phi 300\text{mm}$
 最大长度: 不大于10000mm
 1、材质: 38CrMoAl A
 氮化处理, 表面硬度: $\text{HV}\geq 900$
 氮化层深度: 0.5-0.8mm
 2、材质: 表面WC/Co整体喷焊, 能有效提高螺杆的使用寿命

Specifications:
 Diameter: $\phi 15\text{mm}$ up to $\phi 300\text{mm}$
 Max. length: $\leq 10000\text{mm}$
 1. Material: 38CrMoAl A
 Nitriding treatment, Surface hardness: $\text{HV}\geq 900$
 Nitriding depth: 0.5-0.8mm
 2. Material of barrel inside layer: Tungsten alloy.
 Surface spraying, prolong life of screw



Conical (Parallel) Screw & Barrel

锥 (平) 双螺杆机筒



- 1、材质：38CrMoAl A
氮化处理，表面硬度：HV≥900
氮化层深度：0.5—0.8mm
- 2、材质；基材38CrMoAl A, 螺棱表面采用双合金浇焊，有效的提高了螺杆的寿命
- 3、材质： 基材38CrMoAl A, 料口易磨损部分采用进口合金钢材，经过特殊处理，能有效提高机筒的耐磨性，提高使用寿命

- 1.Material: 38CrMoAl A
Nitriding treatment, Surface hardness: HV≥900
Nitriding depth: 0.5-0.8mm
- 2.Base material: 38CrMoAl A, Special alloy is welded on the flight of screw , prolong life of screw.
- 3.Easy wearing parts of barrel made from anti-wear alloy can be improved abrasion performance.



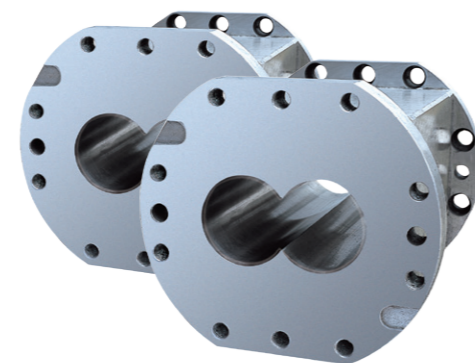
Accessorial

Parts Of Plastics Machinery

塑料机械附件系列



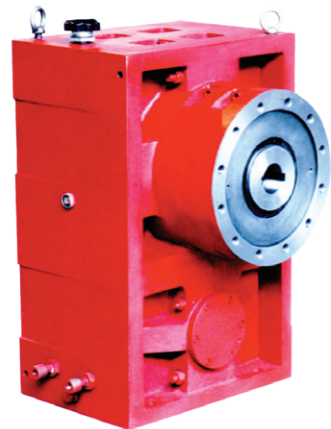
积木式螺杆
Segmental Screw



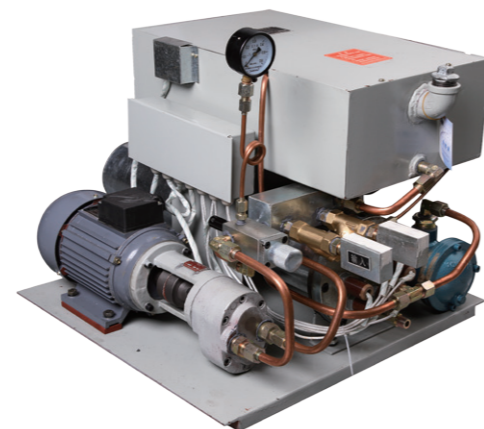
积木式机筒
Segmental Barrel



真空泵
Vacuum Pump



硬齿面磨齿减速箱
Gear Box With Gears Hardend
And Grinded



螺杆机筒调温装置
Temperature Adjusting Device
For Screw & Barrel



哥林柱 (拉杆)
Tie Bar